



SCHOONER BAY

AN OUT-ISLAND HARBOUR VILLAGE



The **Harbour** Marina



Schooner Bay Marina

Phone Number: 242.366.2044 / 242.475.7626
Latitude: N 26 09.529'
Longitude: W 077 10.633'
Harbour Master: Albert Russel,
 Harbourmaster@schoonerbaybahamas.com
Monitors Channel: 16/77
Website: SchoonerBayBahamas.com

Hours: 7:30am-4:30pm
Dock Rate (daily): \$2.00
Dock Rate (weekly): Max 5 night stay, based on availability
Dock Rate (monthly): Max 5 night stay, based on availability

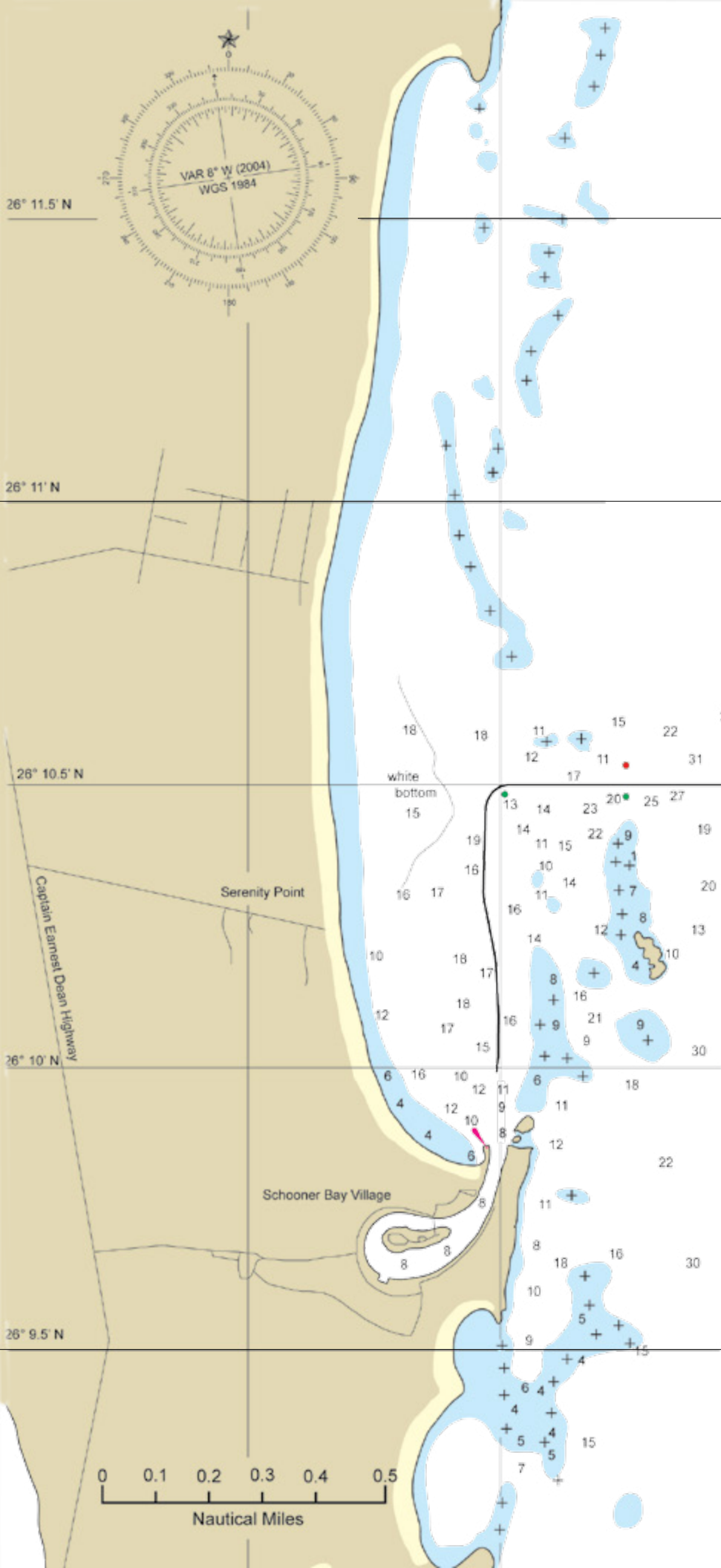
Load Max: 80 ft.
 (Please call ahead for any vessel)
Transient Slips: 14
Total Slips: 40
Docks: Fixed
Approach Depth: 8 ft.
Dockside Depth: 8 ft.
Tide Range: 3 ft.
VHF Monitored: 16/VHF working: 77
Diesel: Available, Rate Varies
Gas: Available, Rate Varies
Dockside Phone: No
Dockside Cable: No
Dockside Water: Yes
Wireless Internet: Complimentary
Pumpout: No
Groceries: Yes, General Store
Security: Yes, 24 Hours
Restaurant: Yes, Beach Cabana and Harbourside Grille
Ice: Yes, General Store
Marine Supplies: Yes, General Store
Snacks: Yes, General Store
Shop Store: No
Laundry: No
Pool: No
Grills: No

Restrooms: Yes
Showers: Yes
Meeting Facilities: No
Yacht Brokerage: No
Pet Friendly: Yes

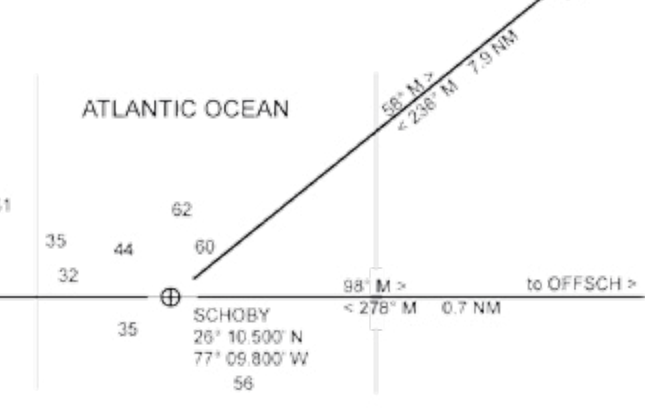
ELECTRIC:
30 Amps: Yes, \$0.65 per day
50 Amps: Yes, \$0.65 per day
100 Amps: No
200 Amps: No
110 Volts: No
220 Volts: No
Metered: Not all slips energized

Repair Services: No
Haul Out Capabilities: No
Transportation: Taxi/Livery
Accommodations: Rental Cottages
 242.366.2048

Beach: Yes
Medical Clinic: No
Real Estate Office: Schooner Bay Ventures
 242.366.2048 / 888.275.1639



The harbour at Schooner Bay Village was opened to the sea in June, 2011, and is the only harbour of refuge between Little Harbour/ Cherokee Sound to Hole-in-the-Wall in the south. Coming from the north it is 7.9 NM from the waypoint OFFCHS to the waypoint SCHOBY. To enter Schooner Bay Village Harbour from SCHOBY proceed due west along latitude line 26° 10.5' N (278° M). Pass between the red/green pair of buoys and proceed further west to the single green buoy. Then turn to port and head for the harbour entrance between the rocky point on the east and the breakwater and sandy beach on the west. This course will hold you off the shoals extending from the offshore rock and the point to the east of the marina entrance. Controlling depth is 8' MLW and the harbour can accommodate vessels to about 80'.



Vessels departing to the south should go east of SCHOBY 0.7 NM to the waypoint OFFSCH and then turn due south to HOLEWL (20.5 NM). This course will hold the vessel further off the rocks at Crossing Rocks which is usually a lee shore.

Schooner Bay is a working/living/recreational town with a harbour which is the centerpiece of this new Bahamian town with homes, condos, vacation rental properties, shops, restaurants, a bonefish lodge and farmland. Visitors are welcome by land as well as sea to this non-gated community

Crossing Rocks, an old Bahamian community of about 200 persons, is located about 1.5 miles to the south. The beach at Schooner Bay is pristine and beautiful, and the fishing and diving just offshore are said to be excellent.